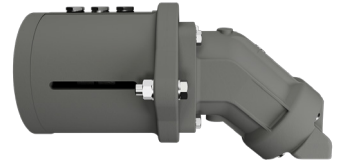


WRP3100

Hydraulic motor set | Low pressure



A complete hydraulic motor set for WRP3100 including adaptor, coupling, and mounted on the pump. Ready to perform full vacuum and pressure.

Metric

| Motor size | cm ³ /rev | 163 | 163 | 163 | 163 | 163 | 163 | 163 | 163 | 163 |
|---|----------------------|-----------|-----------|-----------|-----------|-----------|-----------|-----------|-----------|-----------|
| Oil Pressure | bar | 212 | 200 | 186 | 173 | 160 | 150 | 135 | 123 | 108 |
| Speed | RPM | 1600 | 1500 | 1400 | 1300 | 1200 | 1100 | 1000 | 900 | 800 |
| Oil flow | l/min | 266 | 249 | 233 | 216 | 200 | 183 | 166 | 150 | 133 |
| Motor Power | kW | 83 | 73 | 64 | 55 | 47 | 40 | 33 | 27 | 21 |
| Pump power needed for vacuum and max. 0,5 barg | kW | 83 | 73 | 64 | 55 | 47 | 40 | 33 | 27 | 21 |

Imperial

| Motor size | cm ³ /rev | 163 | 163 | 163 | 163 | 163 | 163 | 163 | 163 | 163 |
|---|----------------------|------------|-----------|-----------|-----------|-----------|-----------|-----------|-----------|-----------|
| Oil Pressure | PSI | 3074 | 2900 | 2697 | 2509 | 2320 | 2175 | 1958 | 1784 | 1566 |
| Speed | RPM | 1900 | 1800 | 1700 | 1600 | 1500 | 1400 | 1300 | 1200 | 1100 |
| Oil flow | Gal/min | 423 | 396 | 370 | 343 | 317 | 291 | 264 | 238 | 211 |
| Motor Power | HP | 111 | 98 | 85 | 74 | 63 | 54 | 44 | 36 | 28 |
| Pump power needed for vacuum and max. 0,5 barg | HP | 111 | 98 | 85 | 74 | 63 | 54 | 44 | 36 | 28 |