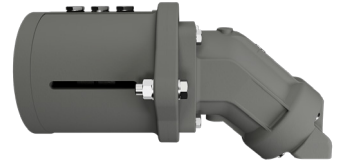


WRP2500

Hydraulic motor set | Low pressure



A complete hydraulic motor set for WRP2500 including adaptor, coupling, and mounted on the pump. Ready to perform full vacuum and pressure.

Metric

Motor size	cm ³ /rev	125	125	125	125	125	125	125	125	125
Oil Pressure	bar	220	205	190	178	165	150	140	125	115
Speed	RPM	1600	1500	1400	1300	1200	1100	1000	900	800
Oil flow	l/min	204	191	179	166	153	140	128	115	102
Motor Power	kW	66	58	50	43	37	31	26	21	17
Pump power needed for vacuum and max. 0,5 barg	kW	66	58	50	43	37	31	26	21	17

Imperial

Motor size	cm ³ /rev	125	125	125	125	125	125	125	125	125
Oil Pressure	PSI	3190	2973	2755	2581	2393	2175	2030	1813	1668
Speed	RPM	1900	1800	1700	1600	1500	1400	1300	1200	1100
Oil flow	Gal/min	423	396	370	343	317	291	264	238	211
Motor Power	HP	88	77	67	58	50	41	35	28	23
Pump power needed for vacuum and max. 0,5 barg	HP	88	77	67	57	49	41	34	28	22