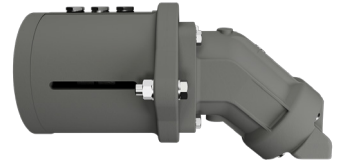


WRP2500

Hydraulic motor set | High pressure



A complete hydraulic motor set for WRP2500 including adaptor, coupling, and mounted on the pump. Ready to perform full vacuum and pressure.

Metric

Motor size	cm ³ /rev	93	93	93	93	93	93	93	93	93
Oil Pressure	bar	295	275	255	235	220	200	185	170	155
Speed	RPM	1600	1500	1400	1300	1200	1100	1000	900	800
Oil flow	l/min	152	142	133	123	114	104	95	85	76
Motor Power	kW	66	58	50	43	37	31	26	21	17
Pump power needed for vacuum and max. 0,5 barg	kW	66	58	50	43	37	31	26	21	17

Imperial

Motor size	cm ³ /rev	93	93	93	93	93	93	93	93	93
Oil Pressure	PSI	4278	3988	3698	3408	3190	2900	2683	2465	2248
Speed	RPM	1900	1800	1700	1600	1500	1400	1300	1200	1100
Oil flow	Gal/min	423	396	370	343	317	291	264	238	211
Motor Power	HP	88	77	67	57	49	41	35	29	23
Pump power needed for vacuum and max. 0,5 barg	HP	88	77	67	57	49	41	35	29	23